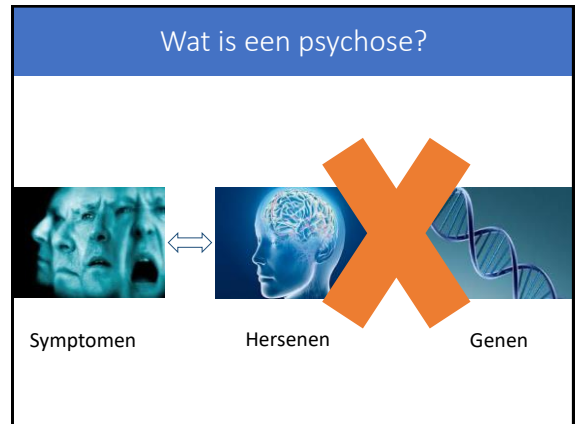




1



2

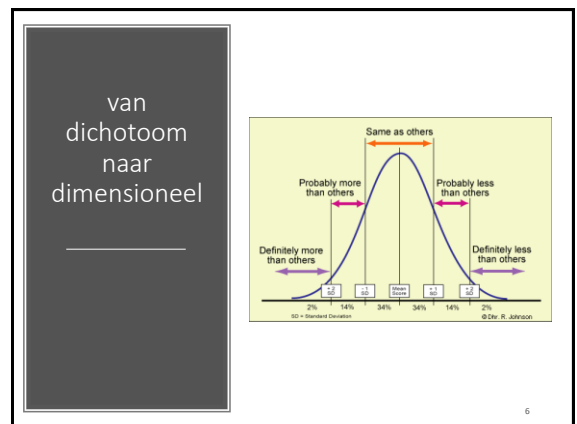


3

4



5



6

Het belang van variatie in eigenschappen

“It is not the strongest of the species that survives, nor the most intelligent, but the one most responsive to change.”
- Charles Darwin, 1809

7

De omgeving: EPI-genetica

8

Zonder context geen bewijs
Over de illusie van evidence-based practice in de zorg

9

Dean Philosophy, Ethics, and Humanities in Medicine (2017) 12:10
DOI 10.1186/s13010-017-0052-x

Philosophy, Ethics, and Humanities in Medicine

REVIEW Open Access

Social inequality, scientific inequality, and the future of mental illness

Charles E. Dean

Abstract
Background: Despite five decades of increasingly elegant studies aimed at advancing the pathophysiology and treatment of mental illness, the results have not met expectations. Diagnoses are still based on observation, the clinical history, and an outmoded diagnostic system that stresses the historic goal of disease specificity. Psychotropic drugs are still based on molecular targets developed decades ago, with no increase in efficacy. Numerous biomarkers have been proposed, but none have the requisite degree of sensitivity and specificity, and therefore have no usefulness in the clinic. The obvious lack of progress in psychiatry needs exploration.
Methods: The historical goals of medicine are explored, including the historical goal of disease specificity.

10

Kwetsbaarheid vs kracht

Heritability = 100% Uniform Lighting

Difference between groups is totally environmental

Heritability = 100% Uniform Lighting

Uniform nutrient solution: Normal

Uniform nutrient solution: Deficient

11

Transformeren van lineair (traditionele wetenschap) naar complex (het echte leven)

- A → B
- A+B op tijdstip C in situatie D → E bij F

12

Nieuwe bronnen (www.psychiatrieverhalenbank.nl)

voor beter begrip, beter herstel en betere zorg

13

Maar niet alles is meetbaar

- Subjectiviteit
- Empathie
- Contact
- professionaliteit

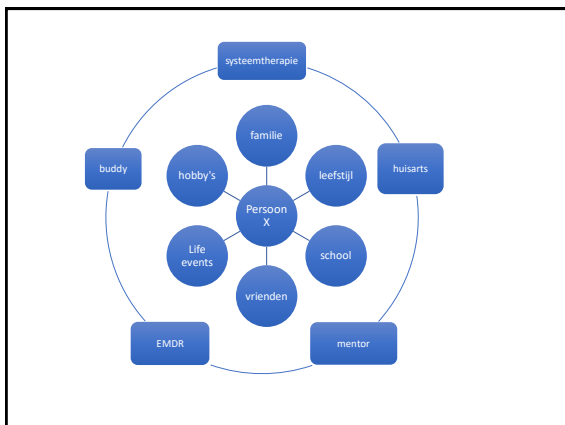
14

En vooral: interactie!
Familie-patient-professional
 Emergentie.

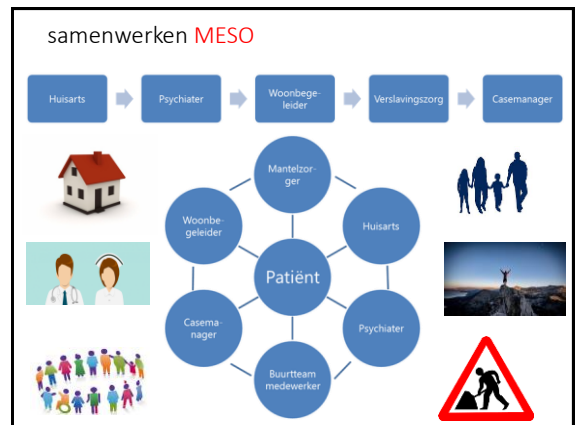
15

Blended Psychiatry; **MICRO** gelijkwaardigheid

16



17



18

PsyNet 

www.psynet.nl

implementatie/transformatie is ploeteren
loop even langs bij de crisiskaartkraam!



psynet.nl

19

Wat moeten we overwinnen: Iedereen spreekt zijn eigen taal. **MACRO**



20

Van individuele excellentie naar collectieve intelligentie



21

PsyNet 

Dank voor uw aandacht

psynet.nl

22